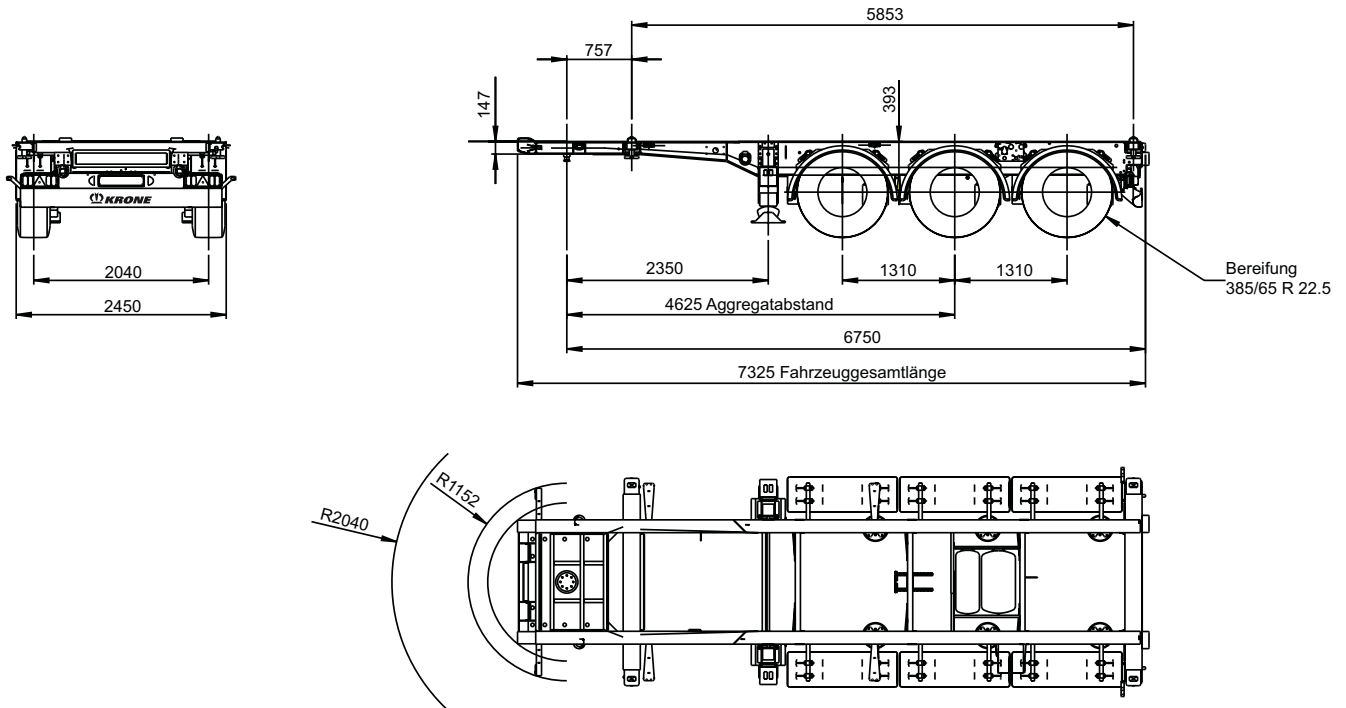


# Box Liner

» Type: SDC 27 eL20'



Chassis with corresponding locks for container transport: 1 x 20'



## Technical data

Type:	SDC 27 eL20'
King Pin load:	14,000 kg
Axle load (technically possible):	27,000 kg
Perm. total weight (technically possible):	41,000 kg
Tare weight:	approx. 3,400 kg
Payload (technically possible):	approx. 37,600 kg
Axle spread*:	1,310 / 1,310 mm
5th wheel height:	1,150 mm
Neck height (incl. coupling plate):	147 mm
Distance kingpin - rear end:	6,750 mm

(Dimensions and weights for standard units)

\*= option: 1,410/1,310 mm

## Load distribution:

Loading options	Total weight of containers (kg)	Coupling load		Axle load		Total weight (kg)
		(kg)	(%)	(kg)	(%)	
20'	30,250	6,650	20	27,000	80	33,650

## Technical description

Chassis made of I beams welded to crossmembers; neck height: 147 mm (incl. coupling plate); bolted 2" kingpin, 1 position: mounted on 575 mm; rear underrun protection and side guards acc. to EC regulation

1 x 20' Container lockings rear position

2 mechanically operated landing legs, 2 x 12 tones capacity, half round compensating feet

Low-maintenance axles with air suspension and disc brakes (430 mm); raise/lower valve incl. auto reset valve; Rims centre nave

Tyres: 6 x 385/65 R 22.5, brand: Krone choice

Wheel covering according to EC-regulations; Spray suppression according to EC-guidelines

spare wheel carrier as an option

EC braking system including vehicle stabilising system; low-maintenance automatic; spring-loaded hand brake; 2S/2M EBS system, 2 sensors on each axle with RSS, diagnostics on ISO 7638 socket (EBS)

24 volts lighting system with 2 x 7-pin socket DIN ISO 1185/3731; front and rear marker lights; with two multi-function rear lights acc. to EC incl. rear fog light and reversing lights; 2 large contouring lights with rubber arm; side marker lights in LED

Steel parts shot blasted, with KTL primer and high-quality surface coating (standard painting single-colour); axles incl. wheel hubs painted black; underrun protection and light panel powder coated white for safety reasons; wheels silver with high-quality paint finish; accessories black or galvanized. reflective outline marking according to ECE-R48

