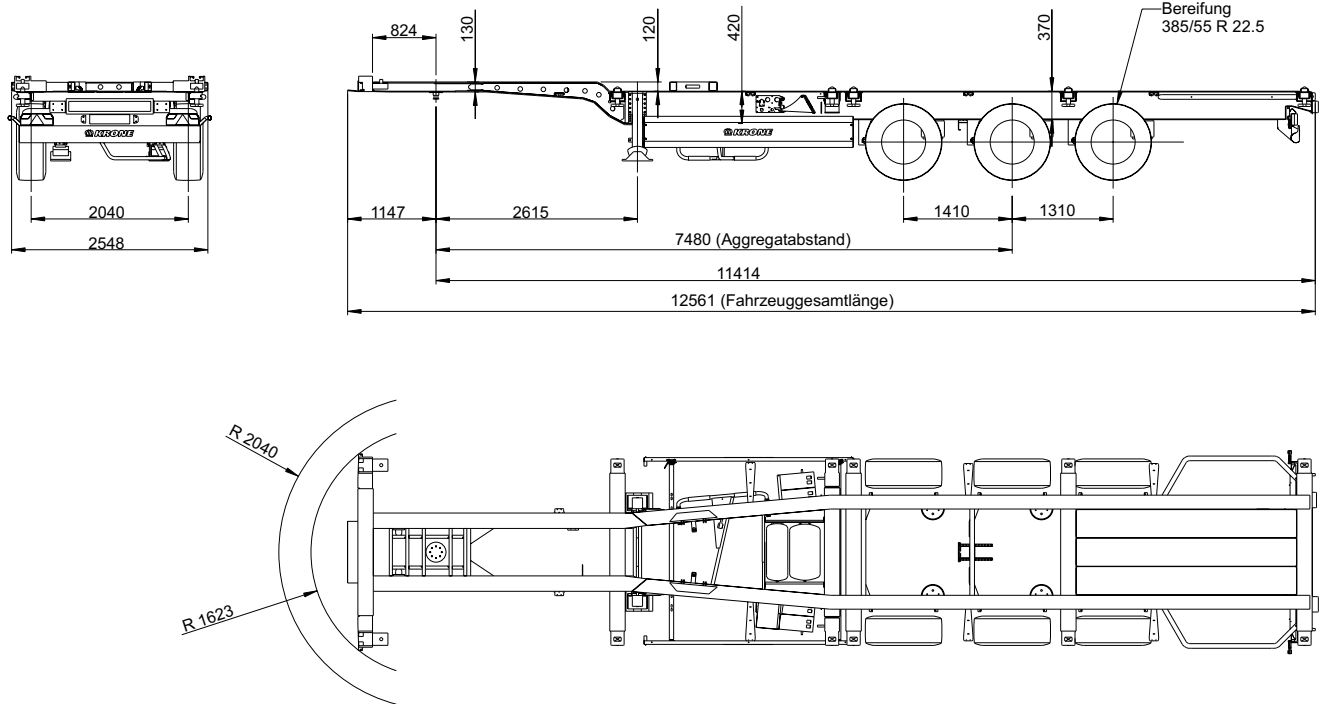


# Box Liner

» Type: SDC 27 eLT3



Chassis with corresponding locks for container transport: 1 x 40' (with tunnel), 2 x 20', 1 x 20'1 x 20' on-centre up to 25 tons and 1 x 30' rear-flush



**Attention: The transport of filled tank containers is prohibited!**

| Technical data                             |                   |
|--|-------------------|
| Type:                                      | SDC 27 eLT3       |
| King Pin load:                             | 14,000 kg         |
| Axle load (technically possible):          | 27,000 kg         |
| Perm. total weight (technically possible): | 41,000 kg         |
| Tare weight:                               | approx. 4,760 kg  |
| Payload (technically possible):            | approx. 36,240 kg |
| Axle spread:                               | 1,410 / 1,310 mm  |
| 5th wheel height:                          | 1,100 mm          |
| Neck height (incl. coupling plate):        | 130 mm            |
| Distance kingpin - rear end:               | 11,414 mm         |

(Dimensions and weights for standard units)

| Load distribution: |                                 |                    |                   |                |               |                   |
|--------------------|---------------------------------|--------------------|-------------------|----------------|---------------|-------------------|
| Loading options    | Total weight of containers (kg) | Coupling load (kg) | Coupling load (%) | Axle load (kg) | Axle load (%) | Total weight (kg) |
| 1x 20' on-centre   | 30,000                          | 10,120             | 28                | 24,880         | 72            | 35,000            |
| 2x 20'             | 2x 16,500                       | 11,000             | 29                | 27,000         | 71            | 38,000            |
| 40' HighCube/ISO   | 33,000                          | 11,000             | 29                | 27,000         | 71            | 38,000            |
| 30' rear flush     | 25,580                          | 3,580              | 12                | 27,000         | 88            | 30,580            |

| Technical description  |
|--|
| Chassis made of I beams welded to crossmembers; cranking 120 mm; neck height: 130 mm (incl. coupling plate); bolted 2" kingpin, mounted on 825 mm; rear bumper; rear underrun protection and side guards acc. to EC regulation;  |
| Container lockings for: 1 x 40', 2 x 20', 1 x 20'1 x 20' on-centre up to 25 tons and 1 x 30' rear-flush  |
| Available on request: Height adjustable container lockings and foldable supports (for transport of container without tunnel), rear bulb plate platform   |
| 2 mechanically operated landing legs, 2 x 12 tones capacity, half round compensating feet  |
| Low-maintenance axles with air suspension and disc brakes (430 mm); raise/lower valve incl. auto reset valve; Rims centre nave   |
| Tyres: 6 x 385/55 R 22.5, brand: Krone choice  |
| Wheel covering according to EC-regulations; Spray suppression according to EC-guidelines   |
| spare wheel carrier as an option   |
| EC braking system including vehicle stabilising system; low-maintenance automatic; spring-loaded hand brake; 2S/2M EBS system, 2 sensors on each axle with RSS, diagnostics on ISO 7638 socket (EBS)   |
| 24 volts lighting system with 2 x 7-pin socket DIN ISO 1185/3731; front and rear marker lights; with two multi-function rear lights acc. to EC incl. rear fog light and reversing lights; 2 large contouring lights with rubber arm in LED; side marker lights in LED  |
| Steel parts shot blasted, with KTL primer and high-quality surface coating (standard painting single-colour); axles incl. wheel hubs painted black; underrun protection and light panel powder coated white for safety reasons; wheels silver with high-quality paint finish; accessories black or galvanized; reflective outline marking according to ECE-R48 |



Fahrzeugwerk Bernard KRONE GmbH & Co. KG  
 Bernard-Krone-Straße 1, 49757 Werlte, GERMANY  
 Phone: +49 (0) 5951 209-0, Fax: +49 (0) 5951 209-98-268

Subject to modifications!  
 VF/Beu issue 11/2016